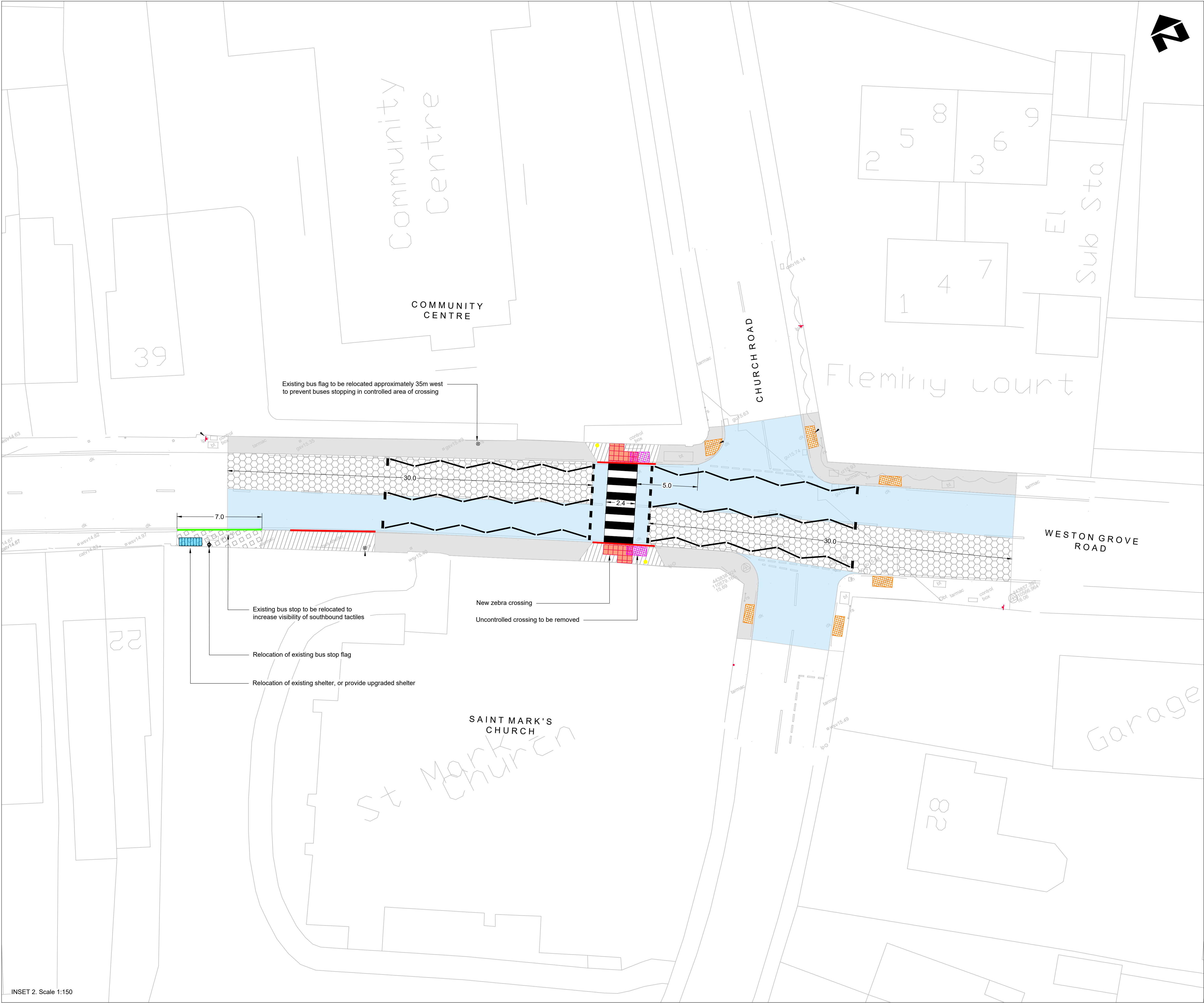


Key:
Proposed Zebra Crossing and relocation of Bus Stop Clearway

- Notes:
1. The original of this drawing was created in colour.
 2. All dimensions are in metres unless specified otherwise.



INSET 2. Scale 1:150

REV	DATE	DESIGNED	CHECKED	APPROVED	AMENDMENT

DRAWING STATUS
FOR INFORMATION

Balfour Beatty
Living Places
Working in partnership

City Depot & Recycling Park
First Avenue, Millbrook
SOUTHAMPTON SO15 0LJ
Tel +44 (0)2380 798010
Fax +44 (0)2380 512883
Web www.bbivingplaces.com
Design Group

SOUTHAMPTON
CITY COUNCIL

Southampton City Council
Civic Centre
SOUTHAMPTON SO14 7LY

DRAWING TITLE
**Woolston & Itchen ATZ
Phase 2
Outline Design
General Arrangement**

DESIGNED DS	DRAWN DS	CHECKED	APPROVED	DATE 15/11/2022	SCALE @ A1 As Shown
DRAWING NUMBER				SHEET	REVISION

22/ATM/039/000/WGR