

Portswood Road - Transforming Cities Fund

10am, Wednesday 2nd December 2020

Presenters

Andrew Ovenden – Senior Communications Officer, Southampton City Council
Emma Baker - Senior Transport Planner, Southampton City Council

Moderators

Wilson Massie – Stakeholder Engagement Officer, Balfour Beatty
Zoe Bearne - Marketing Coordination Manager, Southampton City Council
Wade Holmes - Transport Delivery Team Leader, Southampton City Council

Background

- Connecting Southampton sets out the transport strategy to 2040.
- The plan is built around three key themes that support sustainable growth and mobility for all across the city and wider region.
- The plan sets out a vision centred around connecting people to places and more easily by walking, cycling and public transport.
- The creation of a 'Liveable City' and 'Southampton's Mass Transit System' are fundamental to achieving this.

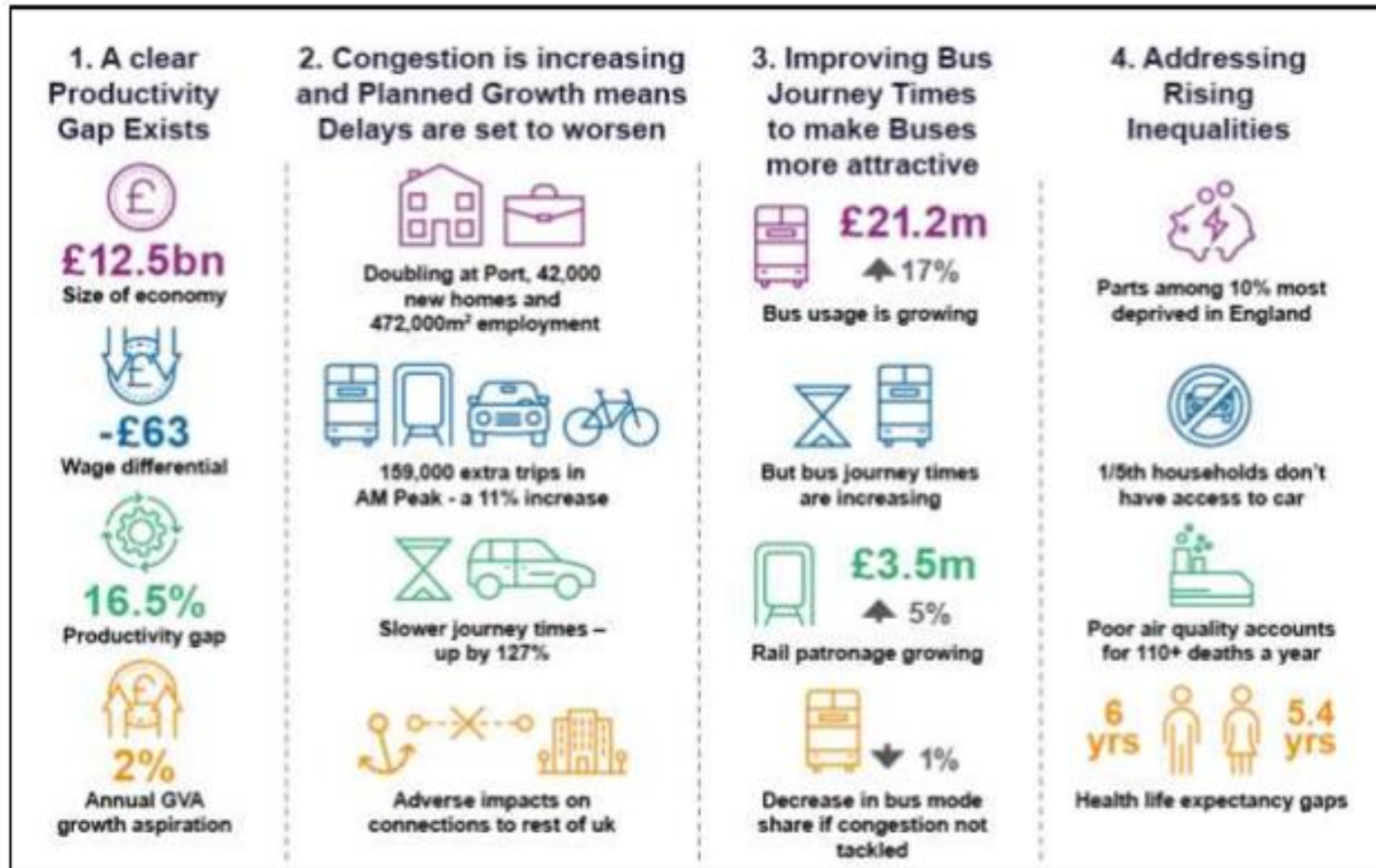


Transforming Cities

- DfT awarded £57 million to Southampton and Hampshire County Council for the city region up to March 2023.
- £11.5 million contribution from SCC and partners.
- Programme focussed on four key corridors, including Portswood Road and Thomas Lewis Way.
- Programme aims to transform:
 - Mobility
 - Lifestyles; and
 - Gateways.

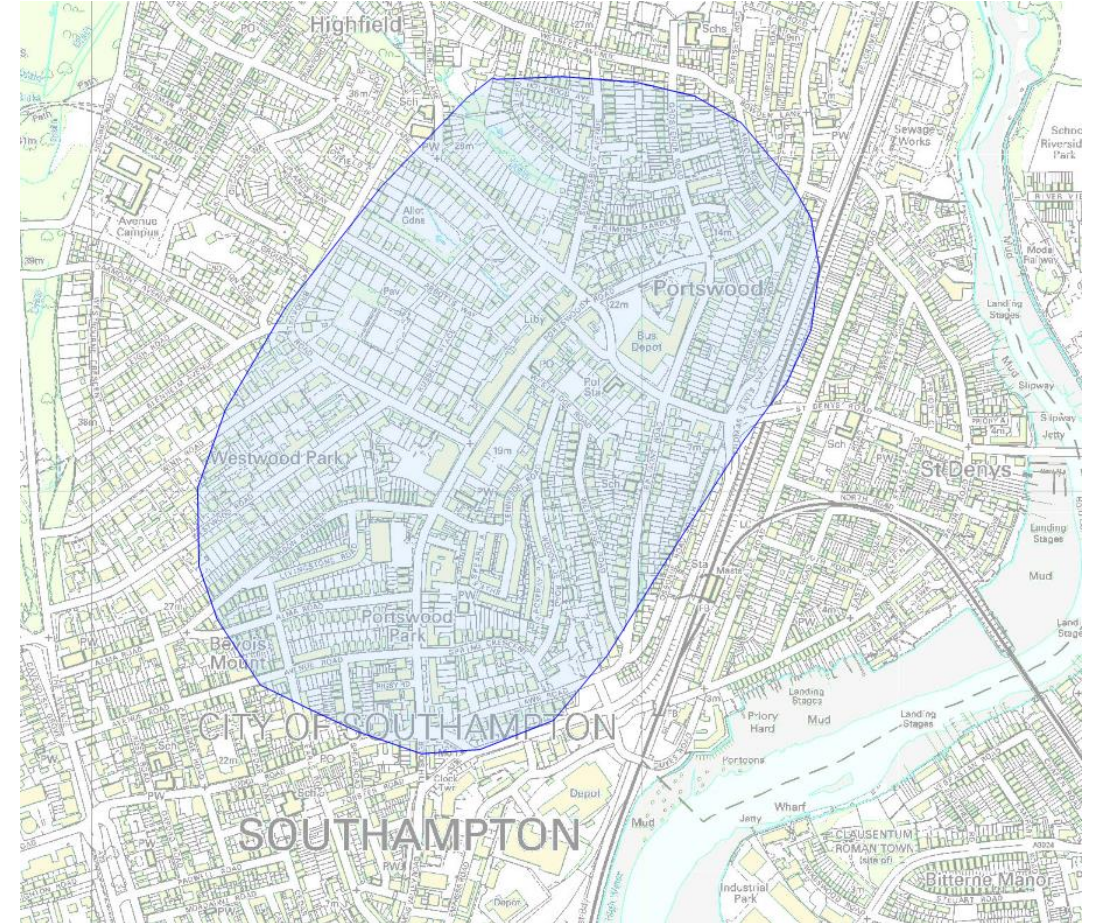


Transforming Cities



Why Portswood Road?

- 33% of trips from Eastleigh end in Southampton and 31% of trips from Southampton end in Eastleigh.
- There are over 4,100 households within a 20 minute walk of Portswood Road.
- Links people to jobs at key employment sites, including the city centre, Solent University, Royal South Hants Hospital, Mountpark, the Airport, Eastleigh Town Centre and Barton Park.
- A number of these journeys are passing through Portswood Road and do not have a destination within it.



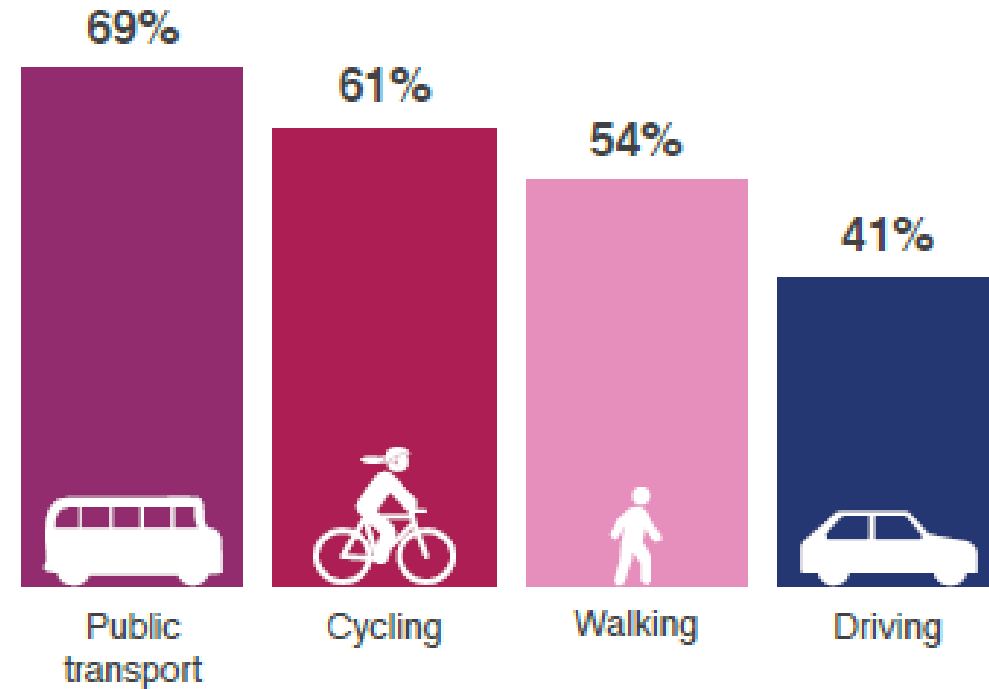
400m radius of Portswood Road (roughly 20 minute walk)

What do we know about Portswood Road?

Key transport stats

- Around 7,500 vehicles per day travelling on Portswood Road and 20,000 on Thomas Lewis Way.
- 22% of people living in the city region do not have access to a car. This increases to 51% in some parts of Southampton.
- Portswood Road is served by 26 buses per hour, but congestion impacts on bus journey times resulting in some services taking over an hour in the PM peak.
- Portswood Road links people to places via SCN6. 4.8% of commuters in Southampton cycle to work.
- Excellent connections to the rail network and passenger numbers are growing.

Proportion of residents who would like to see more government spending on different types of transport

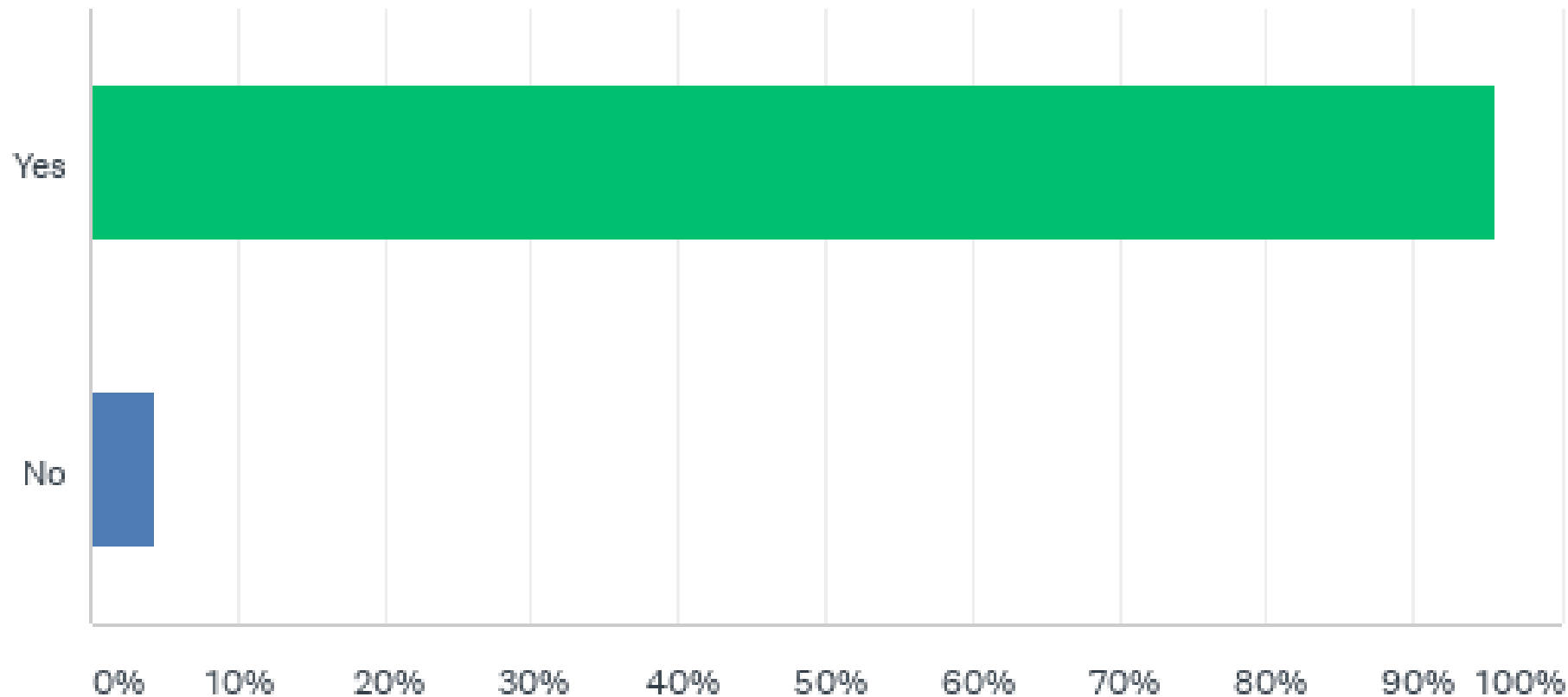
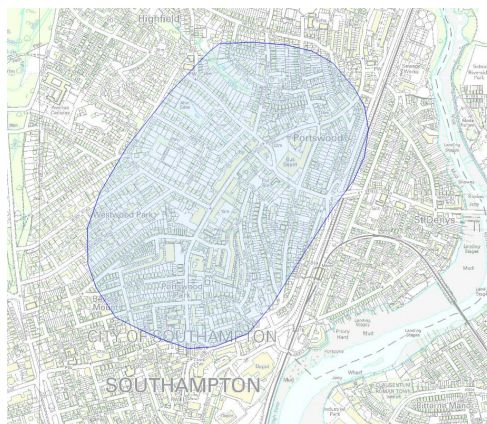


Portswood survey results

From 11 September to 9 November - 203 responses.

Q1: Do you live within a 20 minute walk of Portswood High Street?

- Answered: 203 Skipped: 0



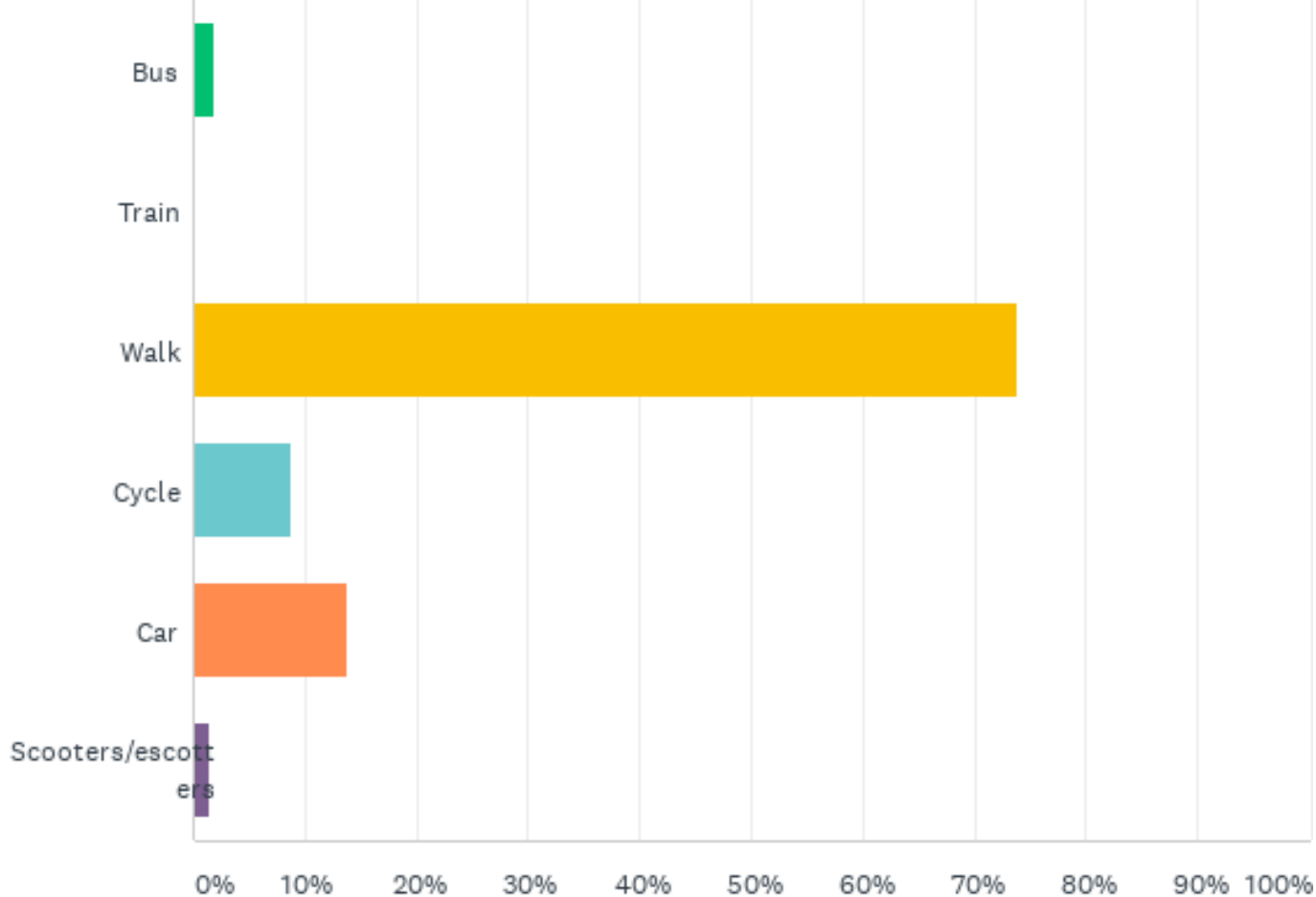
Q1: Do you live within a 20 minute walk of Portswood High Street?

- Answered: 203 Skipped: 0

ANSWER CHOICES	RESPONSES	
Yes	95.57%	194
No	4.43%	9
TOTAL		203

Q2: What is your main mode of transport when travelling to Portswood High Street? (Please select one)

• Answered: 203 Skipped: 0



Q2: What is your main mode of transport when travelling to Portswood High Street? (Please select one)

- Answered: 203 Skipped: 0

ANSWER CHOICES	RESPONSES	
Bus	1.97%	4
Train	0.00%	0
Walk	73.89%	150
Cycle	8.87%	18
Car	13.79%	28
Scooters/escooters	1.48%	3
TOTAL		203

Q3: Do you use other modes of transport to travel in the Portswood area, and why?

- Respondees also cycle, walk and drive through the area.
- Primary finding: many residents that primarily walk when travelling to Portswood High Street will occasionally use a car when going food shopping.

- Sample comments:

“Car when supermarket shopping to carry the bags”

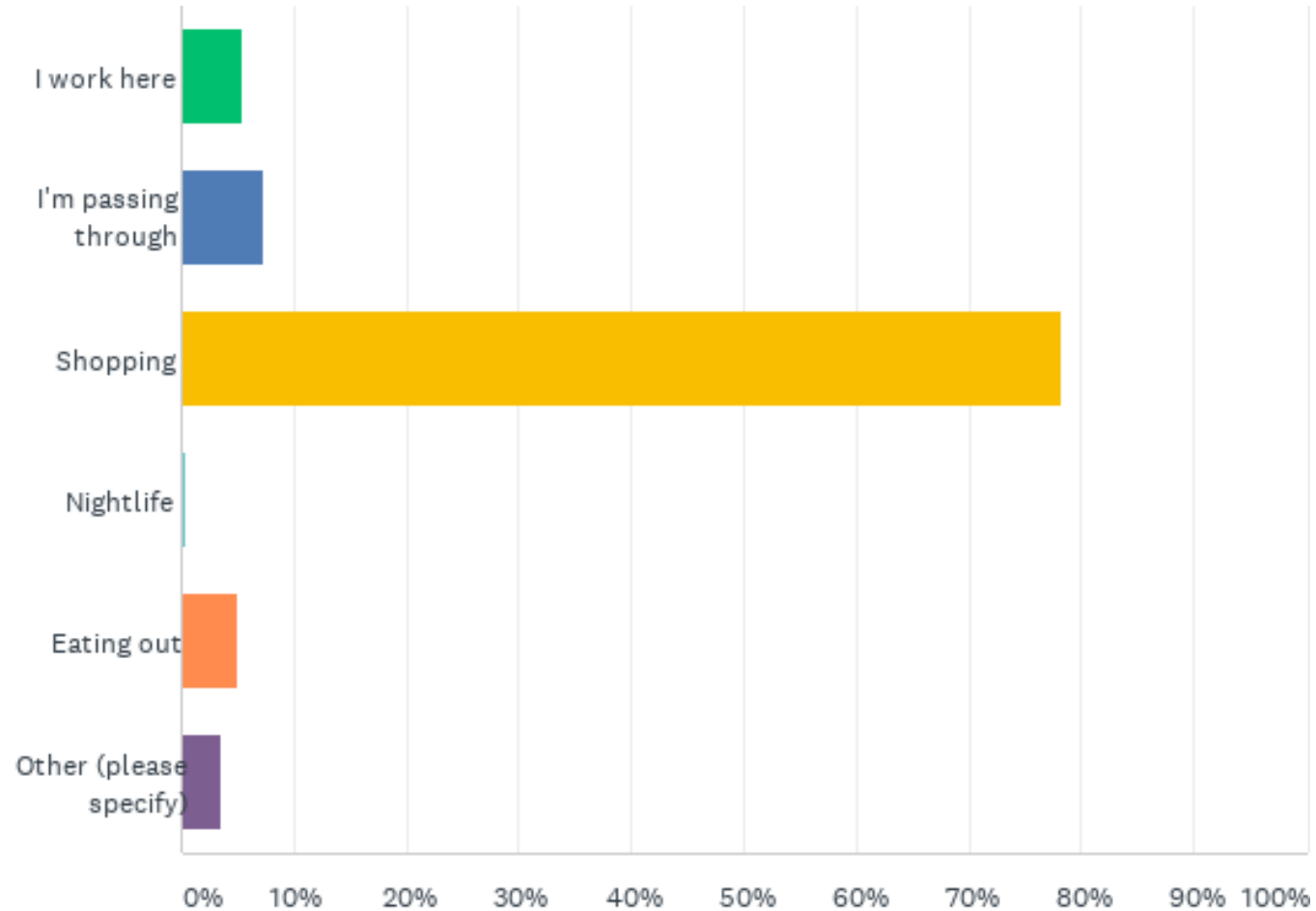
“Cycle; bus. Just when it's necessary and convenient!”

“Car when going to the supermarket, otherwise I also cycle”

“I sometimes use car, park in Russell Place, when it is wet or icy”

Q4: What is your main reason for travelling to the High Street?

- Answered: 202 Skipped: 1



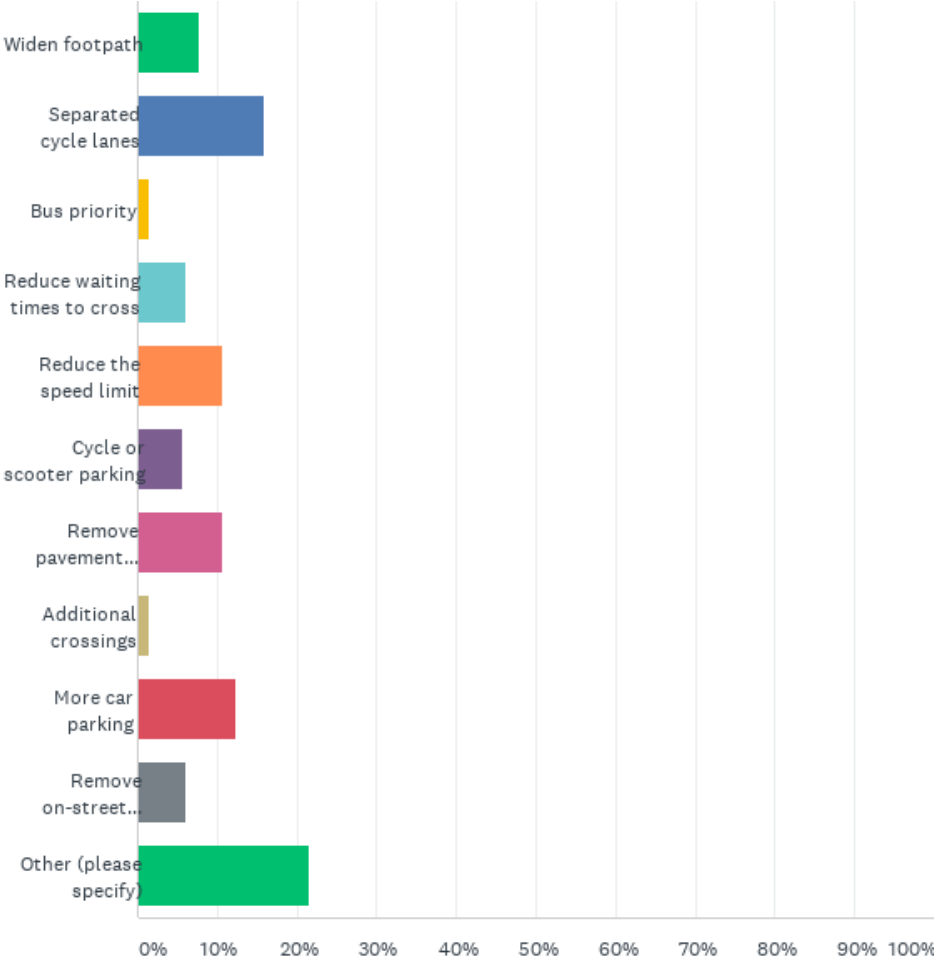
Q4: What is your main reason for travelling to the High Street?

- Answered: 202 Skipped: 1

ANSWER CHOICES	RESPONSES	
I work here	5.45%	11
I'm passing through	7.43%	15
Shopping	78.22%	158
Nightlife	0.50%	1
Eating out	4.95%	10
Other (please specify)	3.47%	7
TOTAL		202

Q5: Would you like to see any of the following improvements made to Portswood High Street?

• Answered: 195 Skipped: 8



Q5: Would you like to see any of the following improvements made to Portswood High Street?

• Answered: 195 Skipped: 8

ANSWER CHOICES	RESPONSES	
Widen footpath	7.69%	15
Separated cycle lanes	15.90%	31
Bus priority	1.54%	3
Reduce waiting times to cross	6.15%	12
Reduce the speed limit	10.77%	21
Cycle or scooter parking	5.64%	11
Remove pavement clutter	10.77%	21
Additional crossings	1.54%	3
More car parking	12.31%	24
Remove on-street parking	6.15%	12
Other (please specify)	21.54%	42
TOTAL		195

Q6: Are there any improvements you would like the council to make to improve travel and transport in the wider Portswood Area?

- Many comments focussed upon improving facilities for buses and cycles, as well as improving traffic light waiting times. Some comments highlighted that they would like to see additional bus services but this is something that is outside of the council's control.
- Other comments suggested we should fill in pot holes or improve drainage/flood alleviation – these issues have been noted however the Transforming Cities Fund is allocated for transport improvements. These concerns can be addressed by other projects.
- Other suggestions included speed cameras, speed bumps and stopping rat-running, as well as improving parking facilities.
- A limited number of comments did not want any changes to be made or opposed measures to improve cycling facilities.

Q6: Are there any improvements you would like the council to make to improve travel and transport in the wider Portswood Area?

- Sample comments:

“Basically improve the environment for cyclists and walkers, reduce through traffic and enable cafes to spill out onto pavements”

“Bus lane and reduce clutter; also stop cars and vans parking on the pavements by installing metal bollards as they do in other cities. Also, have a better parking enforcement officers on the road;”

“Proper bike lanes separated by kerbs. More bike parking. Use on street parking space for outdoor dining”

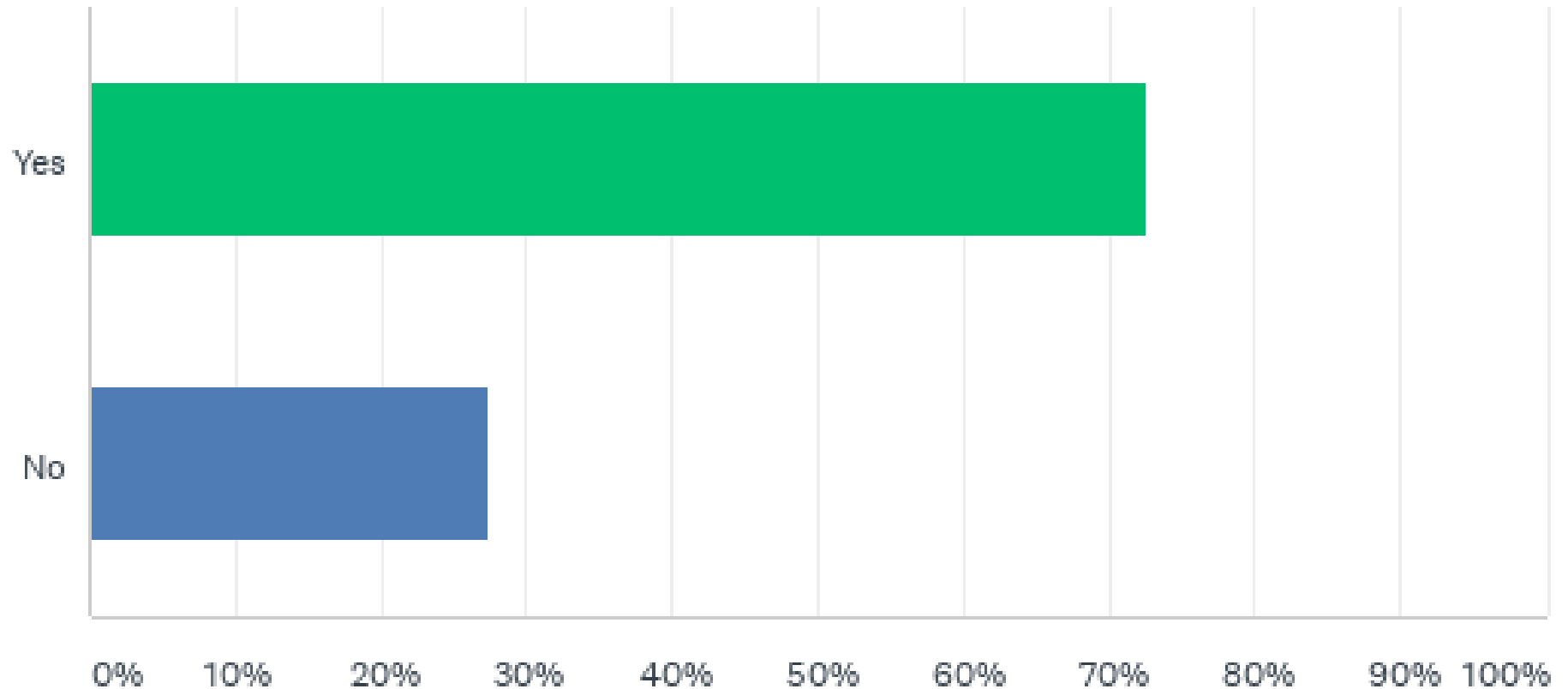
“Install charging points for electric vehicles more generally where suitable locations are available.”

“Potentially walking route signage that gives times between key destinations.”

“More frequent bus service”

Q7: The council has recently introduced temporary cycle lanes in Portswood to support social distancing and encourage active travel. Would you support these remaining longer term?

- Answered: 201 Skipped: 2



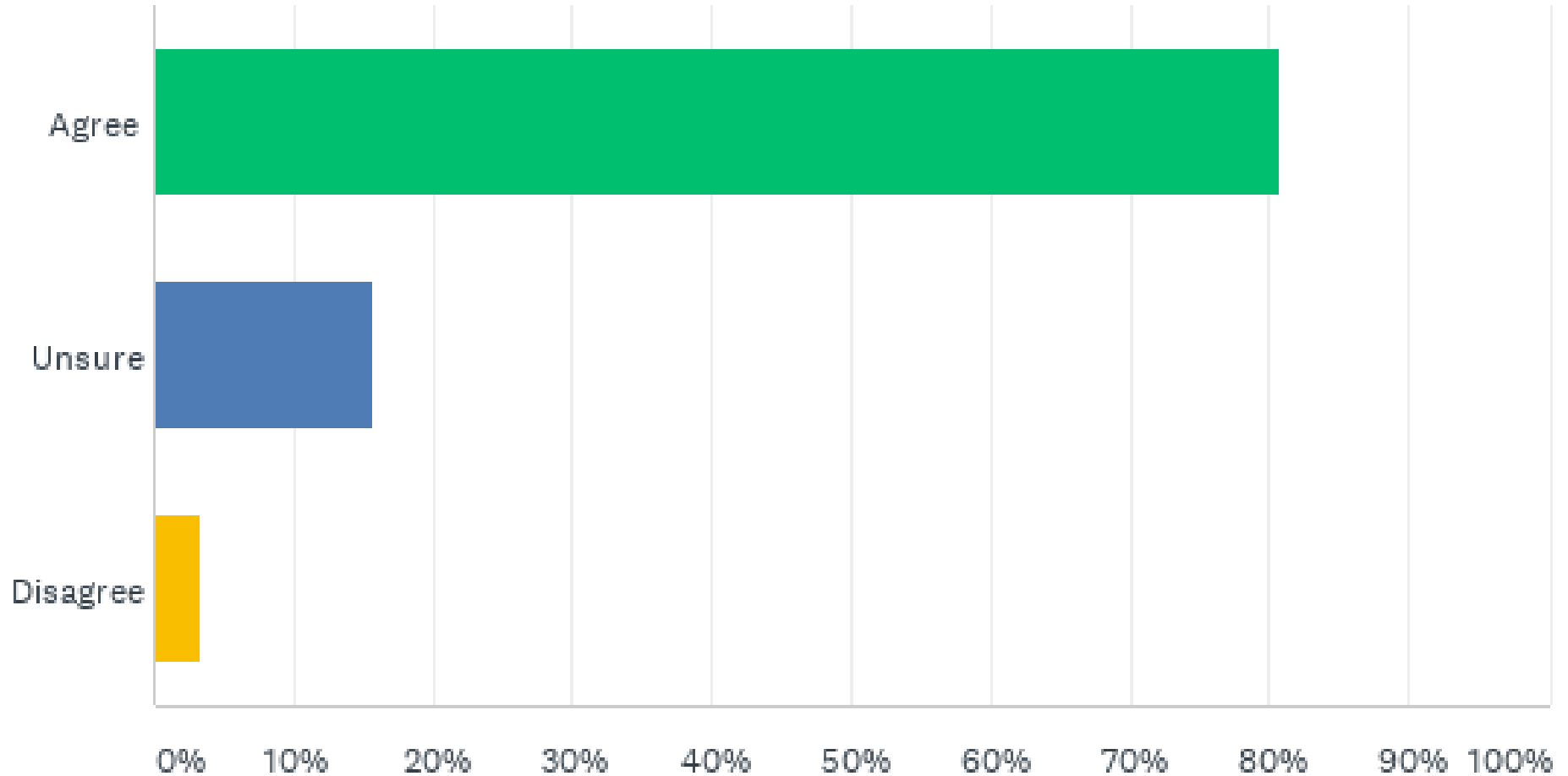
Q7: The council has recently introduced temporary cycle lanes in Portswood to support social distancing and encourage active travel.

- Answered: 201 Skipped: 2 **Would you support these remaining longer term?**

ANSWER CHOICES	RESPONSES	
Yes	72.64%	146
No	27.36%	55
TOTAL		201

Q8: Do you agree with the council's green charter commitment to encourage sustainable travel and improve air quality in the city?

- Answered: 203 Skipped: 0



Q8: Do you agree with the council's green charter commitment to encourage sustainable travel and improve air quality in the city?

- Answered: 203 Skipped: 0

ANSWER CHOICES	RESPONSES	
Agree	80.79%	164
Unsure	15.76%	32
Disagree	3.45%	7
TOTAL		203

Telephone conversations with businesses

- To support the survey, members of the project team phoned businesses in the area to remind them to participate. During these phone calls, participants were asked to share their thoughts on travel and transport in the area and their comments were recorded.
- Generally, most people seemed to agree with the temporary cycle lanes, though this agreement was not unanimous.
- Some business employees that travel from afar commented that parking is bad in the area and they have to spend a lot just to park.
- Some respondents discussed the idea of pedestrianisation in the area with mixed perceptions.
- There is concern from some businesses about what would happen if on-street parking were removed.

What we have learned

- A majority of people walk within the local area however many respondees noted that they use the car when going to the supermarket – shopping is the main reason why people travel to Portswood Road.
- There is a general consensus agreeing with the council's Green City Charter and trialled cycle lanes in Portswood.
- There is support for introducing separated cycle lanes, reducing the speed limit, removing street clutter and increasing car parking.
- There an acknowledgement that bus facilities and services could be upgraded and improved.
- There are mixed feelings about the idea of pedestrianising the area.



What could be done?

- Reclaiming street space for walking and cycling to create more attractive streets.
- The extension of cycle infrastructure along SCN6 - Portswood Road to connect to facilities at Bevois Valley and Stoneham Way.
- Improving footways and crossing facilities, such as footway widening and new or improved raised junctions or crossings.
- Providing continuous crossings at side road junctions.

What could be done (cont.)?

- Bus priority measures, such as bus lanes, bus only restrictions and traffic signal upgrades with bus detection.
- Enhanced bus stop facilities in the form of 'super stops'
- Local Mobility Hub



Question & Answer

Next steps

- This event is the first stage of our engagement programme.
- The next stage set for early 2021 which will be open to the wider public.
- If you have any comments about the proposals, please email: roadworks@southampton.gov.uk
- To learn more about the Portswood TCF project, please visit: transport.southampton.gov.uk/Portswood
- If you would like to sign up for updates, you can do so here: bit.ly/portswood-swaythlingtcf (please note, this link is case-sensitive)