

CONNECTING SOUTHAMPTON

Southampton City Region Transforming Cities Fund

**£57m funding awarded for
transformative travel in Southampton**



Southampton City Region Transforming Cities Fund

£57m funding awarded for transformative travel in Southampton

As part of the 2020 Budget, the Chancellor announced the outcome of the Industrial Strategy's Transforming Cities Fund (TCF). The joint bid from Southampton City Council and Hampshire County Council for the Southampton City Region was awarded £57m of Government funding towards the total £68.5m project and covers the 3 years to March 2023. The remainder of the funding is coming from local match contributions with the Council and it's partners.

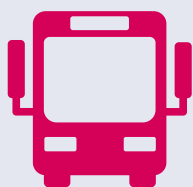
With the £5.7m of TCF money awarded in January 2019 for the early schemes (£7.4m with local contributions), this means there will be £75.9m of transport investment by 2023 in the City Region.

This is enabling Southampton City Council and Hampshire County Council to deliver our plans for sustainable and active travel in the City Region in a targeted way. This is a significant level of capital funding for transport. This will have a transformative impact on people's journeys by bus, walking and cycling, helps Southampton City Council's Green City Plan and Hampshire County Council's Climate Emergency meet growth challenges and will support sustainable growth. For projects that weren't funded through TCF we will continue to work to get these funded to continue developing the City Region's transport network for the future.

Thank you to our key stakeholders for your support with the bid and we look forward to working with you on delivering these TCF projects.

The TCF funding will allow us to invest in measures to transform people's Mobility, Lifestyles and Gateways in the City Region.

Theme 1: Transforming Mobility



Rapid Bus Corridors that use priority and partnership with bus operators to make travelling by bus easy, quick and attractive through combining new physical bus priority, enhanced bus stops, innovative technology, and modern, low-emission vehicles, the bus will be the travel mode of choice instead of the private car.

These will be corridor improvements from Hythe & Totton to Southampton, from Bishopstoke & Eastleigh to Southampton, with a connection from Townhill Park, also across the Itchen Bridge from Woolston.



Park & Ride for Southampton that provides people with a new facility at Southampton West, close to M271, for services to the Hospital and at weekends into City Centre.



Local Mobility Hubs in Eastleigh, Portswood and Woolston that widen the choice and availability of shared e-mobility in local areas that combine access to a range of electric vehicles (cars, vans or bikes) with 'click and collect' services, coffee or public transport.



Smart Technology on A33 and A335 that through Connected-Intelligent Transport Systems provides priority to improves reliability of the Rapid Bus through the worst congestion bottlenecks at traffic signals.

Theme 2: Transforming Lifestyles



Further completion of the **Southampton Cycle Network** that enables people to make safe and easy bike journeys to work and for leisure, through a coherent network of direct, high-quality, segregated routes connecting suburbs and workplaces across the City Region.

Completing cycle routes to Hythe from Totton, on The Avenue, to Eastleigh via Portswood, and to Bursledon via Northam, Bursledon and Portsmouth Roads.

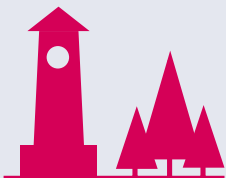


Active Travel Zones in St Denys and Woolston where walking and cycling become the norm for local neighbourhood journeys. These areas will be designed and developed by listening to and working with local communities and incorporating their ideas. .

Theme 3: Transforming Gateways



Investing in Better Interchanges including within the City Centre at Southampton Central station, and at other rail stations and transport hubs including Woolston, Swaythling, and Southampton Airport Parkway.



Transforming the quality of City Centre public spaces within the heart of the City into a much more vibrant, stimulating and people-focussed place, less dominated by moving or parked cars, supporting clean air, and where people enjoy visiting again and again, helping boost businesses and the local economy.

A major change to the road layout in the City Centre with a sustainable transport led spine route between Six Dials in the east, New Road and Civic Centre Place in the west that allows access for bus, cycles, and taxis only. Changes to the Inner Ring Road to the north making it easier for people to cross on foot or by bike. Providing two new bus hubs in Portland Terrace and Above Bar Street, and sections of bus priority around the City Centre connecting the corridors.

The Funded TCF Programme

The funding will allow us to focus on three transport corridors between Southampton and the surrounding areas in Hampshire and in the City Centre.

The funding will be focused on three key transport corridors and the City Centre, as detailed below.

Southampton to Totton and Fawley
£19.8m

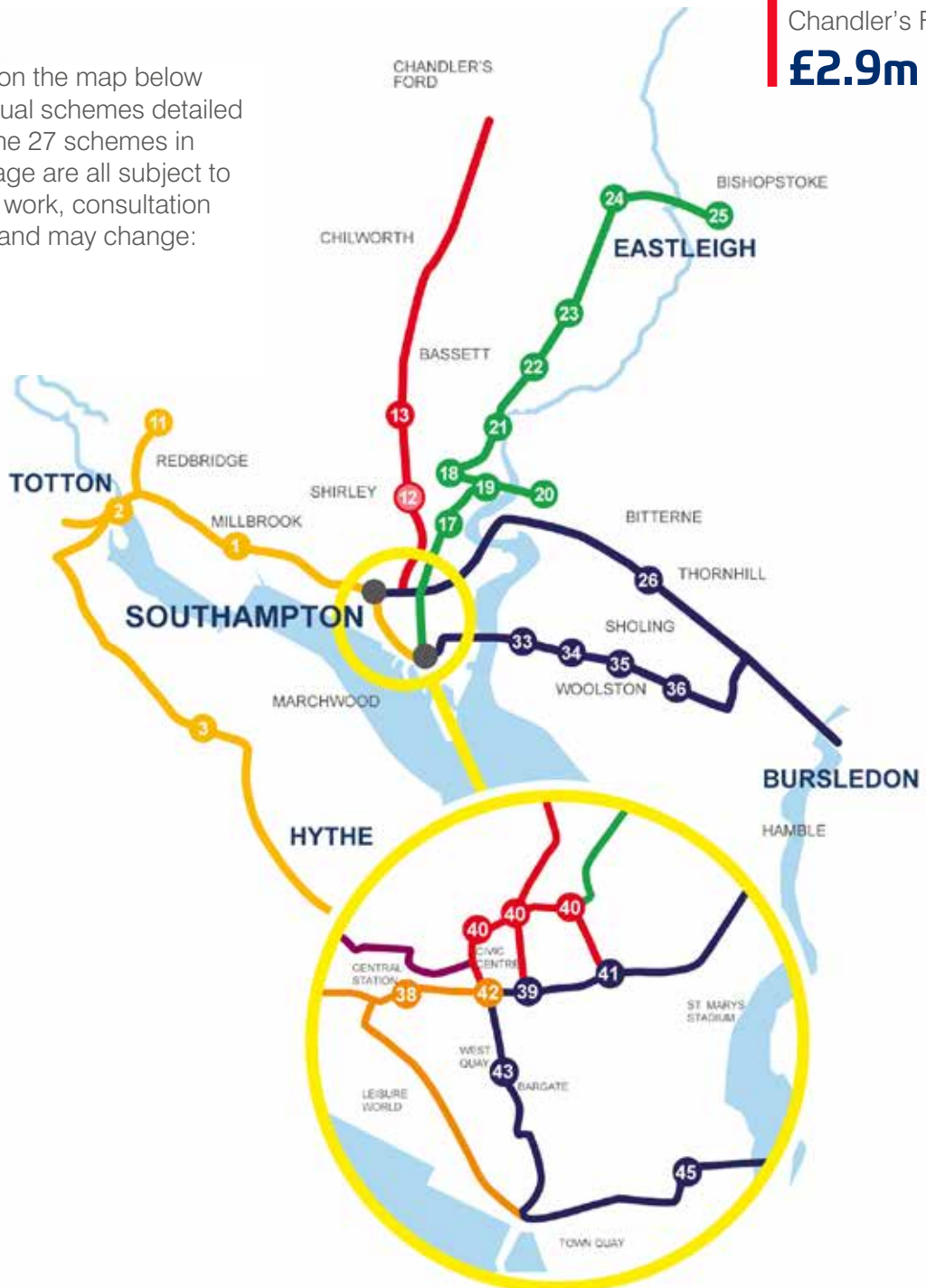
Southampton to Portswood, Eastleigh and Bishopstoke
£18.1m

Southampton to Woolston and Bursledon
£7.4m

City Centre
£20.3m

The funding also allows us to complete the cycle corridor works on The Avenue to Chandler's Ford
£2.9m

The numbers on the map below refer to individual schemes detailed in the table. The 27 schemes in the TCF package are all subject to further design work, consultation and approval and may change:





Southampton - Totton - Fawley Corridor

1	SCN1 Southampton-Totton-Hythe Cycle Route	Off-road segregated cycle path from Harbour Parade to Leisure World on West Quay Road
		Upgrade of path and parapets across Redbridge Causeway
		New route linking from Eling to Marchwood, Hythe and Fawley upgrading existing and providing new facilities
2	A33-A35 Smart Technology Corridor	Bus priority and signal technology, additional Enhanced VMS
3	Southampton-Totton-Hythe Rapid Bus	Bus lanes in both directions on Mountbatten Way
		Bus lanes towards Southampton on Millbrook Road West
		Bus lane towards Southampton approaching Millbrook Roundabout
		Changes to allow the bus priority around Rushington Roundabout towards Southampton
		New bus only access from A326 to Marchwood Bypass for buses towards Southampton
		Improving waiting and real-time information facilities for people using the bus including new larger bus stops in Hythe, Totton and at Regents Park Road
11	Southampton West Park & Ride	Waiting facilities, cycle parking, click & collect facilities at Southampton West P&R site, bus priority from site to Redbridge Roundabout, junction works at Frogmore Lane/Brownhill Way and Coxford Road/Lordshill Way, and bus stop improvements at Lordshill and stops between P&R and Hospital

Southampton – Chandler’s Ford Corridor

12	SCN5 Southampton-Chilworth Cycle Route	Continue SCN5 segregated cycle route along The Avenue and onto Burgess Avenue
		Making it easier for people cycling to get around the Chilworth Roundabout roundabout linking to the shared use route north to Chilworth and Chandler’s Ford
13	A33/A35 The Avenue/Burgess Road Junction	Changes to improve crossing points for people walking and cycling, and bus priority

Southampton – Portswood - St Denys – Bishopstoke Corridor

17	SCN6 Southampton-Eastleigh Cycle Route	Network of quieter cycle routes between The Avenue and Bevois Valley Road
		Off-road shared use cycle route along Bevois Valley Road
		Cycle Segregated route along Portswood Road from Lodge Road to Swaythling
		Cycle lanes on Stoneham Lane from Bassett Green Road to M27
		Network of quieter cycle routes in Eastleigh between Southampton Road and Leigh Road
18	Portswood Local Mobility Hub	In Portswood District Centre a place for click & collect, accessing shared e-mobility (bikes, cargo bikes, scooters, vans), and the bus
19	St Denys Active Travel Zone	Working with the community to develop a range of schemes to shape the St Denys area so it is easier to walk and cycle
20	St Denys Road Rapid Bus	Bus priority and lanes on St Denys Road from Cobden Bridge to Portswood
21	A335 Smart Technology Corridor	Changes to the Thomas Lewis Way to support buses and people cycling across on St Denys Road
		Signal technology to improve the operation of the traffic lights on Thomas Lewis Way
22	Wessex Lane & Swaythling Station Travel Hubs	Working with the University to improve bus passenger interchange facilities around Stoneham Halls on Wessex Lane
		Local travel options, included shared e-mobility, from Swaythling station
23	Southampton Airport Parkway Travel Hub	Local travel options, included shared e-mobility, from Southampton Airport Parkway station
24	Eastleigh Local Mobility Hub	In Eastleigh Town Centre a place for click & collect, accessing shared e-mobility (bikes, cargo bikes, scooters, vans), and the bus
25	Southampton-Bishopstoke Rapid Bus	Providing bus priority in traffic signals and bus only sections of Portswood Road
		Providing bus priority and bus passenger facilities on High Road
		Bus lane on Bishopstoke Road from Bishopstoke towards Eastleigh and other bus priority
		Improving waiting and real-time information facilities for people using the bus including new larger bus stops in Portswood, Swaythling and Eastleigh

Southampton – Woolston – Bursledon Corridor

26	SCN3 Southampton- Bursledon Cycle Route	Upgrading the existing shared use path to pedestrian-cycle segregated on Northam Road
		Upgrading the existing shared use path on Bursledon Road to pedestrian-cycle segregated from Botley Road to Windhover Roundabout
		New on and off-road cycle facilities on Providence Hill from River Hamble to Windhover Roundabout
33	Woolston Interchange & Local Mobility Hub	In Woolston District Centre a place for click & collect, accessing shared e-mobility (bikes, cargo bikes, scooters, vans), and bus and rail, new Super Stop at Woolston (Itchen Bridge)
34	Woolston Active Travel Zone	Working with the community to develop a range of schemes to shape the Woolston area so it is easier to walk and cycle
35	Southampton- Woolston Rapid Bus	Changes to the junction of Itchen Bridge and Portsmouth Road to remove the roundabout
36	SCN5 Southampton- Woolston Cycle Route	New off-road and quietway cycle route following Portsmouth Road from Itchen Bridge to Botley Road

Southampton City Centre

38	Southampton Central Station Interchange	Enhanced multi-modal transport interchange on the south side of Southampton Central Station with new bus facilities (bus shelters, real-time information), onwards travel (shared e-mobility), cycle parking, taxi and drop off facilities, and public realm to connect the station with the future Mayflower Quarter
39	East-West Spine Sustainable Transport Corridor	Restrictions in access on New Road between East Park Terrace and Civic Centre Road to buses, taxis and cycles only
		Changes to the junction at Civic Centre Place (with Portland Terrace) to simplify making it easier for people to cross, removal of through traffic towards New Road, new public space in front of the Civic Centre, and changes to Civic Centre Road to make it easier to cross
40	Northern Inner Ring Road Junctions	Changes to junctions on the Inner Ring Road between Charlotte Place and Civic Centre Place to make it easier for people on foot or cycling to cross, changes to traffic signals and some accesses
41	A33/A3024 Six Dials Junction	Changes to the junction to consolidate its size reflecting restriction changes to New Road, new crossing facilities and spaces
43	City Centre Bus Hubs	New major bus hub on the site of the Albion Place-Castle Way car park with new waiting facilities, shared e-mobility, travel information, seating and landscaping
		New bus hub on Above Bar Street close to the pedestrian precinct with new waiting facilities, taxi rank, travel information and shared e-mobility
45	City Centre Bus Priority	Bus, cycle and taxi only restriction on Portland Terrace at West Quay
		Bus only road on Saltmarsh Road from Itchen Bridge

What are the Next Steps?

We will now be working towards and planning delivery of the TCF Programme which will include:

- Provide regular updates for Council Members, stakeholders and delivery partners about the progress of schemes to be developed and delivered as a result of this funding
- Complete the last early funded schemes on The Avenue and to Totton
- Arrange a series of meetings with key delivery partners to progress schemes
- Develop our detailed delivery programme of the projects
- Carry our further design work, consultation and engagement with public, Council Members affected businesses, and stakeholders
- Grow the TCF project team to support successful delivery
- Keep everyone updated through the Connecting Southampton website Hampshire County Council website, My Journey and social media
- Monitor and evaluate how we are doing to ensure that the investment delivers what we were expecting.

