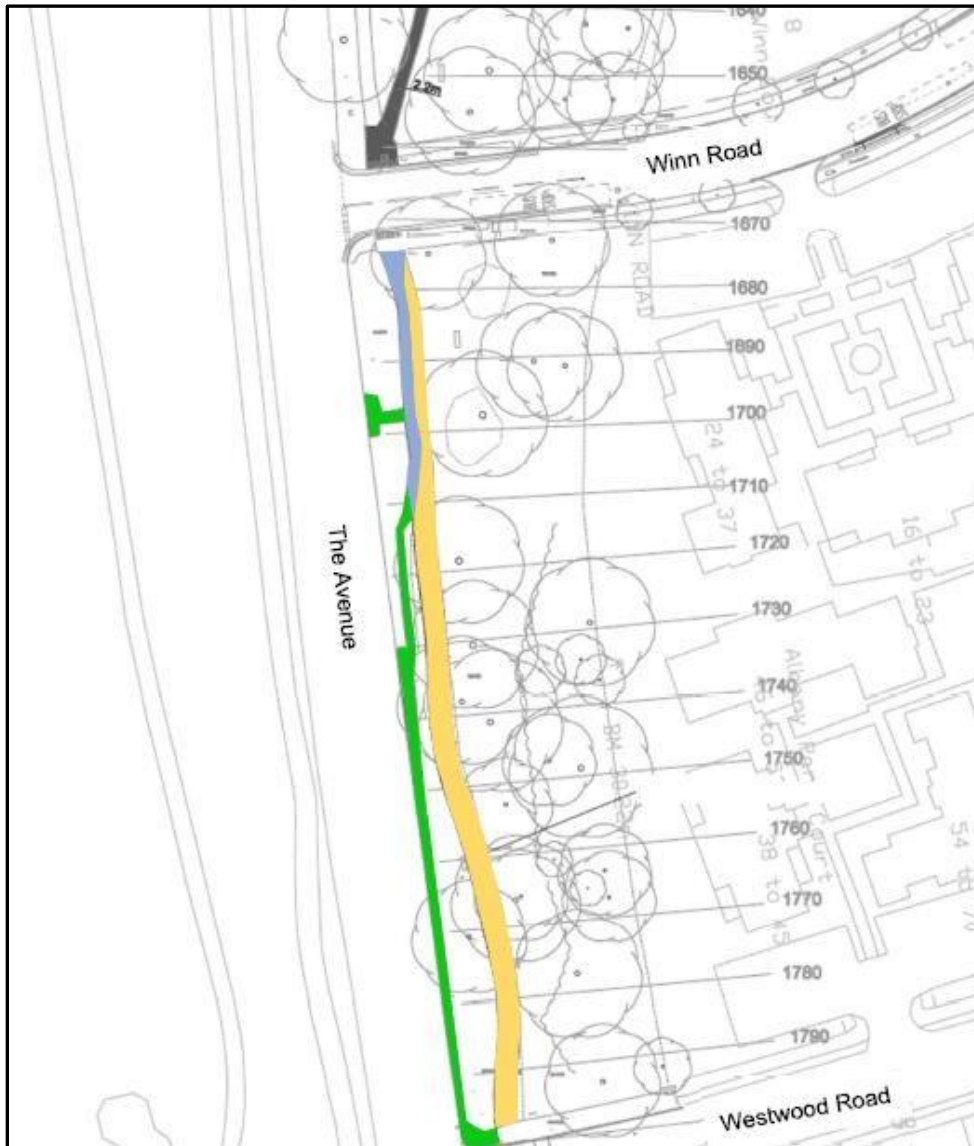





Section 3 - Winn Road to Westwood Road



Key

-  Area of tarmacked footpath turned to grass verge (to remain grass verge if s38 approved) 143m²
-  Area of tarmacked surface removed and turned to compacted gravel (to be tarmacked if s38 approved) 53m²
-  Area of trodden verge turned to compacted gravel (to be tarmacked if s38 approved) 311m²